



Roxtec LabSeal™ C LTX

Easy-to-clean transit for labs and cleanrooms.

The Roxtec LabSeal™ is optimized for cable and pipe penetrations in airtight facilities such as laboratories and cleanrooms. It is hygienically designed with an easy-to-clean powder-coated aluminum frame and a smooth surface with drainable edges, integrated compression units and hidden mounting screws. The lightweight and area efficient transit is easy to install. It ensures an airtight seal when attached to the wall or ceiling and provides spare capacity for future upgrades.



- Quick and easy to install
- Easy to maintain and inspect
- Provides built-in spare capacity
- Modular design

Product characteristics



Fire rated



IP/UL NEMA

Structure of installation



Sandwich panel



Gypsum

Mounting type



Bolting

Ratings & certificates

Fire

- E/EI rating according to EN 13501

Tightness

- IP 66/67 according to IEC 60529

Frame dimensions

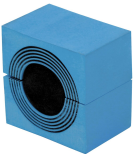
in/lbs

The frame variants below are a limited selection. For the full range of frames and configurations, please visit [roxtec.com](https://www.roxtec.com).

Product	Frame openings	Packing space	External dimensions WxHxD	Aperture dimensions w x h	Weight	Art. no
LABSEAL C LTX WITH COUNTER FRAME 0-40	2	2.362 x 7.087	7.913 x 11.654 x 3.386	6.496(+0.079/-0.039) x 10.276(+0.079/-0.039)	6.5	241407
LABSEAL C LTX WITH EXT. FRAME 90-100	2	2.362 x 7.087	7.913 x 11.654 x 5.748	6.496(+0.079/-0.039) x 10.276(+0.079/-0.039)	7.7	244894

Sealing components

Sealing components



CM module with Multidiameter™

For detailed information, please visit [roxtec.com](https://www.roxtec.com).



Pre-configured transit kits

in/lbs



Product	Configuration	External dimensions WxHxD	Aperture dimensions w x h	Weight	Art. no
LABSEAL C LTX/6	6x (0.945-2.126)	7.913 x 11.654 x 5.748	6.496(+0.079/-0.039) x 10.276(+0.079/-0.039)	9.9	246143
LABSEAL C LTX/15	12x (0.394-0.984), 3x (0.945-2.126)	7.913 x 11.654 x 5.748	6.496(+0.079/-0.039) x 10.276(+0.079/-0.039)	9.9	246142
LABSEAL C LTX/24	24x (0.394-0.984)	7.913 x 11.654 x 5.748	6.496(+0.079/-0.039) x 10.276(+0.079/-0.039)	10	246141

The product information provided by Roxtec does not release the purchaser of the Roxtec system, or part thereof, from the obligation to independently determine the suitability of the products for the intended process, installation and/or use.

Roxtec gives no guarantee for the Roxtec system or any part thereof and assumes no liability for any loss or damage whatsoever, whether direct, indirect, consequential, loss of profit or otherwise, occurred or caused by the Roxtec systems or installations containing components not manufactured by an authorized manufacturer and/or occurred or caused by the use of the Roxtec system in a manner or for an application other than for which the Roxtec system was designed or intended.

Roxtec expressly excludes any implied warranties of merchantability and fitness for a particular purpose and all other express or implied representations and warranties provided by statute or common law. User determines suitability of the Roxtec system for intended use and assumes all risk and liability in connection therewith. In no event shall Roxtec be liable for indirect, consequential, punitive, special, exemplary or incidental damages or losses.

The Roxtec products are offered and sold in accordance with the conditions of the Roxtec General Terms of Sales. The latest version of the Roxtec General Terms of Sales can be downloaded from <https://www.roxtec.com/en/about-us/about-roxtec/general-terms-of-sales/>

We reserve the right to make changes to the product and technical information without further notice. Any errors in print or entry are no claims for indemnity. The content of this publication is the property of Roxtec International AB and is protected by copyright.

This document was generated on: 2025-08-21